

# NEST

INTERBODY SYSTEM

## NEST Interbody System

Nest Interbody System is a hollow, rectangular lumbar implant consisting both solid and porous structures designed for bone in-growth and biological fixation. Inspired by the microstructure of cancellous bone, and enabled by Paonan's 3D printing manufacturing process, this composite architecture provide a positive environment for cellular adhesion and proliferation.

## Features

### A Smooth Wedge-shaped Design

Easy Insertion

### B Titanium Dioxide Layer and Rough Surface

Promote cellular adhesion and proliferation

### C Serrated Surface Design

Enhance fixation stability and avoid expulsion/migration

### D Diamond Lattice / Solid Framework Composite Architecture

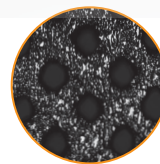
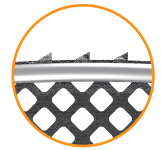
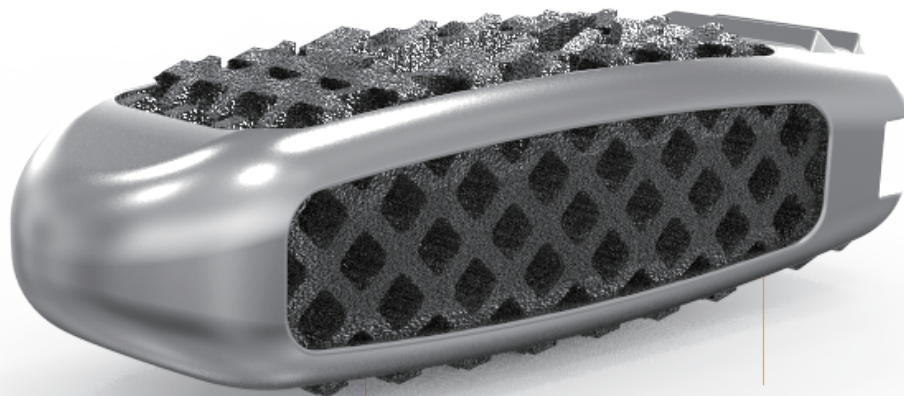
Optimized elastic modulus to provide mechanical integrity and minimize subsidence

### E Interconnected Porous Structure

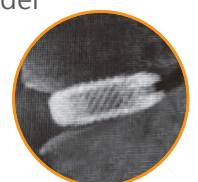
Promote cellular adhesion and proliferation

### F Optimal imaging characteristics

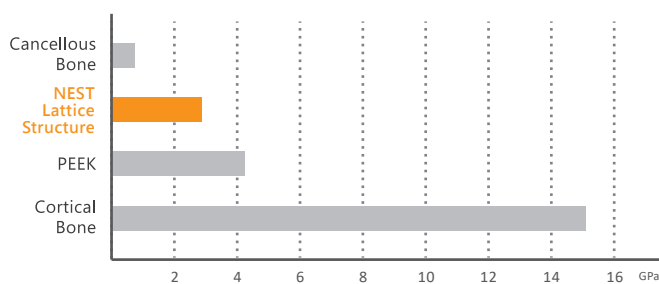
Excellent imaging properties under X-Ray and CT



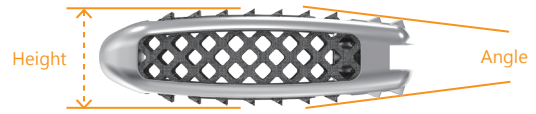
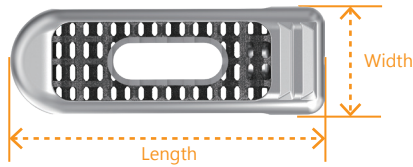
Pore size range: 700-900 $\mu$ m  
Porosity:  $\approx$  70-80%



Elastic modulus of implant materials in comparison to bone



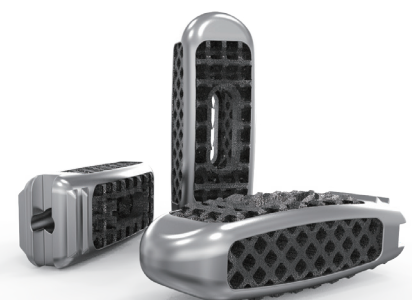
## ● Specification





















Size: mm

REF	Width (W)	Length (L)	Height (H)	Angle (°)
21001008220803	8	22	8	12
21001008220904	8	22	9	12
21001008221004	8	22	10	12
21001008221104	8	22	11	12
21001008221204	8	22	12	12
21001008221304	8	22	13	12
21001008221404	8	22	14	12
21001008240803	8	24	8	12
21001008240904	8	24	9	12
21001008241004	8	24	10	12
21001008241104	8	24	11	12
21001008241204	8	24	12	12
21001008241304	8	24	13	12
21001008241404	8	24	14	12
21001008260803	8	26	8	12
21001008260904	8	26	9	12
21001008261004	8	26	10	12
21001008261104	8	26	11	12
21001008261204	8	26	12	12
21001008261304	8	26	13	12
21001008261404	8	26	14	12
21001008280803	8	28	8	12
21001008280904	8	28	9	12
21001008281004	8	28	10	12
21001008281104	8	28	11	12
21001008281204	8	28	12	12
21001008281304	8	28	13	12
21001008281404	8	28	14	12
21001008300803	8	30	8	12
21001008300904	8	30	9	12
21001008301004	8	30	10	12
21001008301104	8	30	11	12
21001008301204	8	30	12	12
21001008301304	8	30	13	12
21001008301404	8	30	14	12

REF	Width (W)	Length (L)	Height (H)	Angle (°)
21001009220803	9	22	8	12
21001009220904	9	22	9	12
21001009221004	9	22	10	12
21001009221104	9	22	11	12
21001009221204	9	22	12	12
21001009221304	9	22	13	12
21001009221404	9	22	14	12
21001009240803	9	24	8	12
21001009240904	9	24	9	12
21001009241004	9	24	10	12
21001009241104	9	24	11	12
21001009241204	9	24	12	12
21001009241304	9	24	13	12
21001009241404	9	24	14	12
21001009260803	9	26	8	12
21001009260904	9	26	9	12
21001009261004	9	26	10	12
21001009261104	9	26	11	12
21001009261204	9	26	12	12
21001009261304	9	26	13	12
21001009261404	9	26	14	12
21001009280803	9	28	8	12
21001009280904	9	28	9	12
21001009281004	9	28	10	12
21001009281104	9	28	11	12
21001009281204	9	28	12	12
21001009281304	9	28	13	12
21001009281404	9	28	14	12
21001009300803	9	30	8	12
21001009300904	9	30	9	12
21001009301004	9	30	10	12
21001009301104	9	30	11	12
21001009301204	9	30	12	12
21001009301304	9	30	13	12
21001009301404	9	30	14	12



## Instrument List

Instrument	No.	Description
	SMC-2-SSH06Q	Starter Shaver
	420-07(07)D ~ 07(14)D	Double Grooved Shaver #7 ~ #14
	NXL-01(08) ~ 01(14)	NEST Lumbar Cage Trial #8 ~ #14
	NXL-0104	NEST Lumbar Cage Sliding Hammer
	420-2100	Lumbar Cage Holder
	NXL-2100	NEST Lumbar Cage Holder (Gun Type)
	420-2108	Final Impactor
	420-2113	Straight Pusher
	420-0101	T-Handle
	420-2120	Bone Impactor
	420-2205	Straight Scraper
	420-2205LR	Curved Curette
	420-8015	Cage Socket
	420-2006	Graft Compactor
	420-0506	Nerve Retractor 6 mm
	420-0508	Nerve Retractor 8 mm
	420-0003	Instrument Tray
	NXL-2007	Bone mill