

# EXTERNAL FIXATOR

Universal System, Uni-Bar System

User-friendly  
Better adaptability



# Universal System High fatigue strength Aluminum Alloy



A. Pin Holder Clamp  
 Catalog No. H-10 Description W/one Ø 8mm Rod



Catalog No. H-11 Description W/two Ø 8mm Rod



B. Articulation Coupling  
 Catalog No. Description  
 D-84 Ø 8mm X Ø 4mm  
 D-85 Ø 8mm X Ø 5mm  
 D-88 Ø 8mm X Ø 8mm



C. Sleeve  
 Catalog No. Description  
 D-S4 Ø 4mm  
 D-S5 Ø 5mm  
 D-S6 Ø 6mm



D. Curved Connecting Rod, Ø 8mm  
 Catalog No. Description  
 \*\* D-18001 L180mm

E. Connecting Rod, Ø 8mm  
 Catalog No. Description  
 D-18150 L150mm  
 D-18200 L200mm  
 D-18250 L250mm  
 D-18300 L300mm  
 \*\* D-18350 L350mm

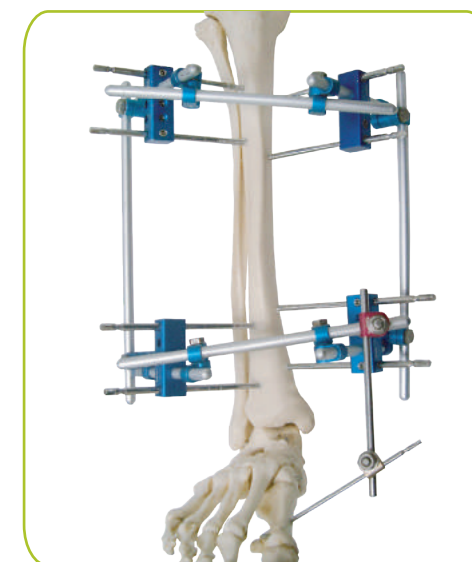
## Simplicity

Light-weighted and simplified instruments for easier assembly

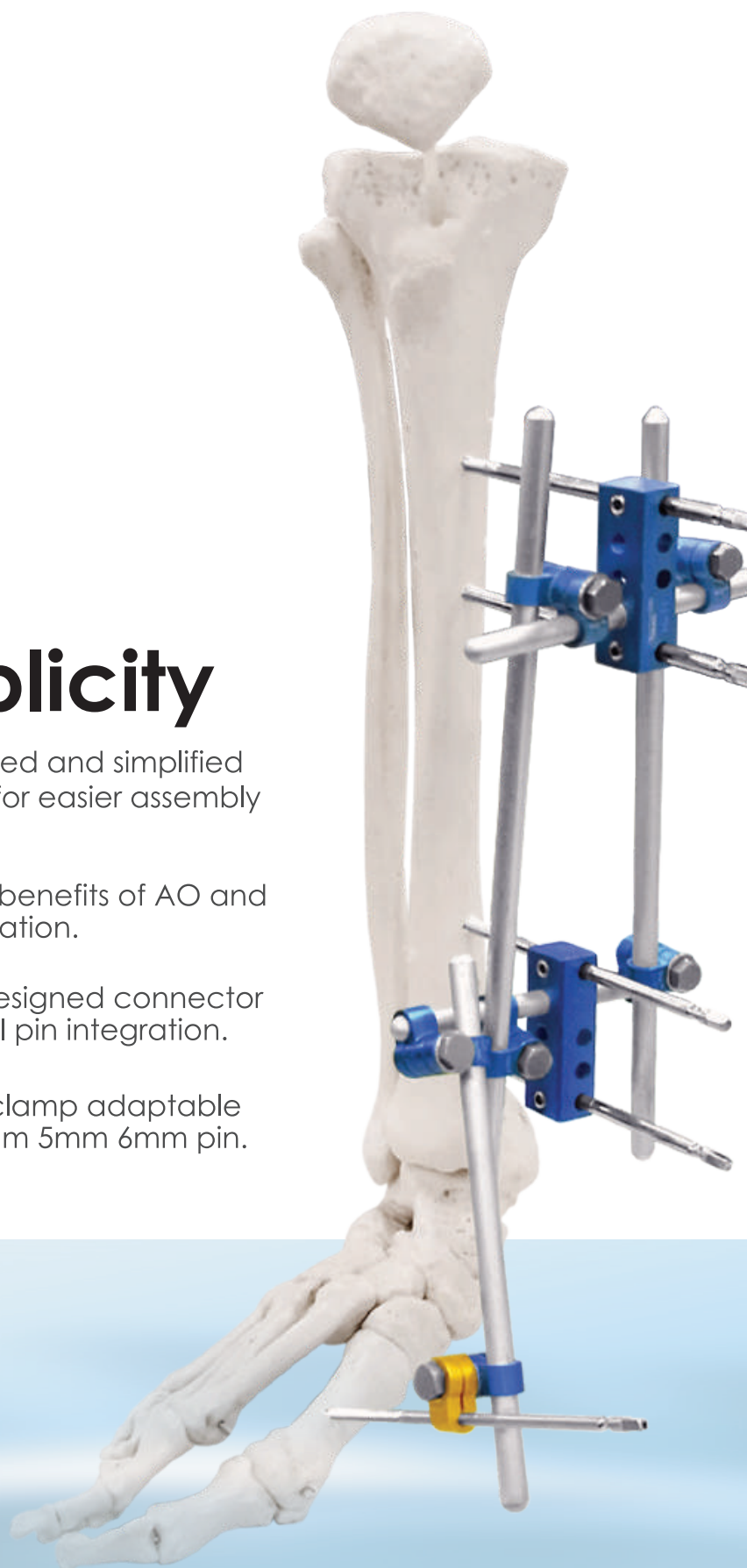
- ◆ Integrated benefits of AO and Hoffman fixation.
- ◆ Specially designed connector for universal pin integration.
- ◆ Pin holder clamp adaptable with dia.4mm 5mm 6mm pin.

## Versatility

Universal construction available to meet various indications and needs.



- Diversified combination available for optimum treatment
- Mobility, added pin can be fixed in various points.



# Universal

\*\* Additional Order





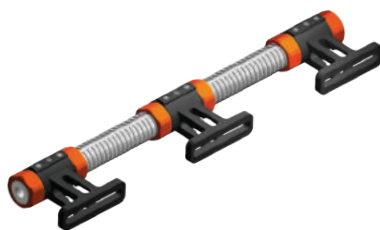
U1 - Pin Clamp



U3 - Smooth Rod L200mm  
U4 - Smooth Rod L300mm



U5 - Distraction  
& Compression Rod



BTF1 - Bone Transfer Frame L300mm  
BTF2 - Bone Transfer Frame L200mm



U6 - Rod Connector  
Ø 20mm x Ø 20mm



U7 - Rod Connector  
Ø 20mm x Ø 8mm



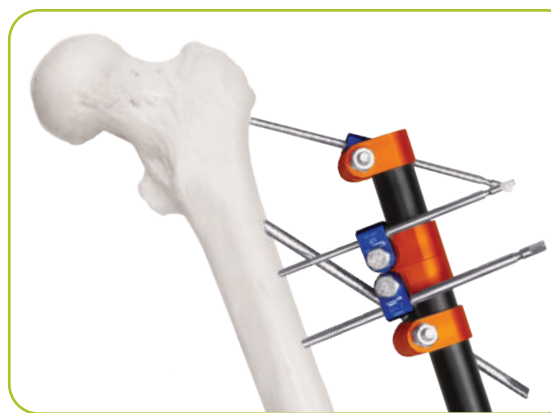
**Controlled Distraction & Compression**  
Integrated 3-way construction provides maximum fixation and curative effect for complicated fracture.

## Stability

- Optional Single-sided fixation with strong stability.
- Multi-angled and Universal Fixation design for easy assembling.
- Independent Pin Placement Allow multi-angled pin placement and be able to remain the stability of the construction.



Solid and reinforced structure for effective support.



Ball joint design allowing larger locking angles.



Specially clamp engagement designed with pins allowing angled penetration.

# Universal System



## F. Pin Holder Clamp

Catalog No.	Description
S-10	W/one dia.5mm Rod
S-11	W/two dia.5mm Rod
** S-12	W/two dia.5mm Transverse Rod



## G. Articulation Coupling

Catalog No.	Diameter of hole
S-53	5mm X 3mm
S-54	5mm X 4mm
S-55	5mm X 5mm

## H. Curved Connecting Rod, Dia.5mm

Catalog No.	Description
** S-18001	140mm in Diameter (stainless steel)

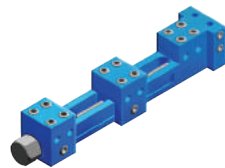
## I. Connecting Rod, Dia.5mm

Catalog No.	Length
S-18100	100mm (stainless steel)
S-18150	150mm (stainless steel)
S-18200	200mm (stainless steel)



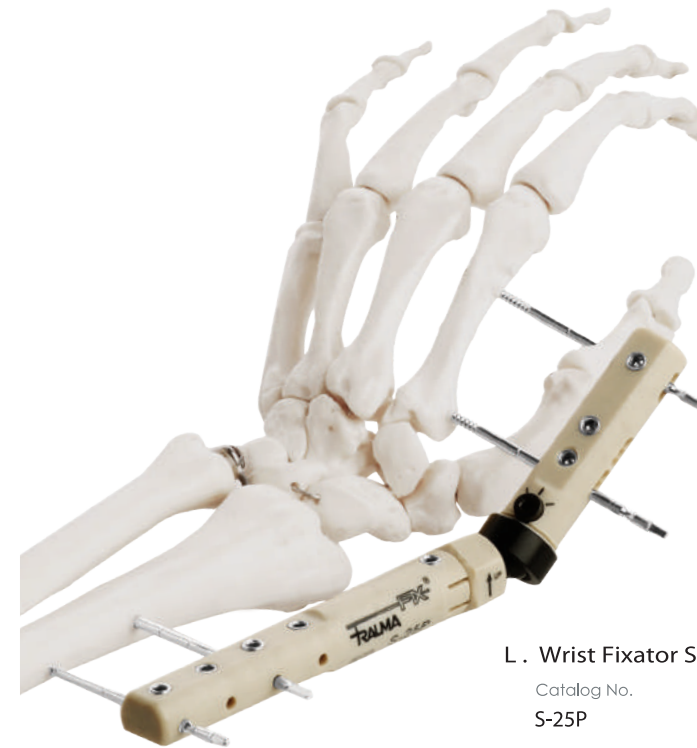
## J. Small Bone Lengthening

Catalog No.	Description
S-23	L 60mm
S-24A	L110mm
S-24B	L200mm



## K. Small Lengthening or Bone Transfer For Small Bone

Catalog No.	Description
S-21	L 80mm
S-22	L 95mm
S-22A	L150mm



## L. Wrist Fixator Set

Catalog No.
S-25P

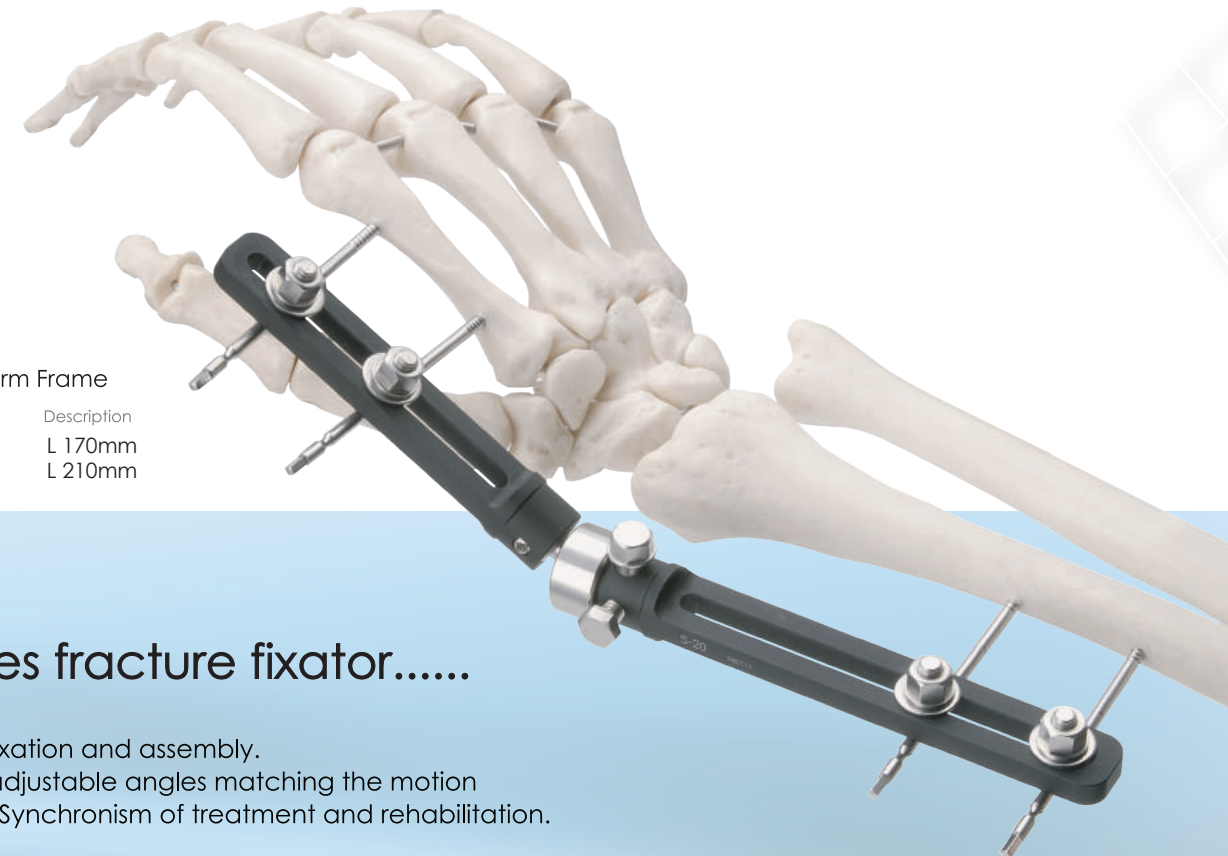


S-250P-4 Wrist Fixator Set

## Complete sterile kit

Disposable sterile package with complete instrument accessories

- ◆ Stability
- ◆ User-friendly modules for easier operation and reduction
- ◆ Secure and solid stability
- ◆ Rotational angle adjustment up to 120°
- ◆ Safe length extension in situ up to 25mm
- ◆ Compound material, light and radiolucent



## M. Colles-Forearm Frame

Catalog No.	Description
S-20	L 170mm
S-25	L 210mm

## Adaptability

Small-sized component available for special application. Diversified combination available for optimum treatment. Pin can be fixed with rod in any directions through coupling.

## Colles fracture fixator.....

Easier fixation and assembly. Freely adjustable angles matching the motion of wrist Synchronism of treatment and rehabilitation.

Universal

\* Material : Stainless Steel  
\*\* Additional Order



# Pin System Two types of pin available including single diameter one and double diameter one

## P. Half Pin

Catalog No.	Diameter	Length
TF-2045	2mm	45mm
** TF-2075	2mm	75mm
TF-2307	2~3mm	70mm
TF-2309	2~3mm	90mm
TF-3008	3mm	80mm
TF-3011	3mm	110mm
TF-4015	4mm	150mm
TF-4018	4mm	180mm
TF-4515	4~5mm	150mm
TF-4518	4~5mm	180mm
** TF-5015	5mm	150mm
** TF-5018	5mm	180mm
** TF-5615	5~6mm	150mm
** TF-5618	5~6mm	180mm
** TF-6015	6mm	150mm
** TF-6018	6mm	180mm
** TF-6020	6mm	200mm
** TF-6022	6mm	220mm
** TF-6025	6mm	250mm

## Q. Full Pin

Catalog No.	Diameter	Length
** TF-3420	3~4mm	200mm
TF-4525	4~5mm	250mm
TF-4530	4~5mm	300mm
** TF-5625	5~6mm	250mm
** TF-5630	5~6mm	300mm

\*\* Additional Order

## Instrument



A. Drill Brace  
A-1



B. Chuck  
A-3 3mm    A-5 5mm  
A-4 4mm    A-6 6mm



C. Jacobs chuck  
A-7



D. T-Wrench  
A-10



E. Open Wrench  
A-11 10mm



F. Hex Screw Driver  
A-12 3.0mm



G. Drill Bit  
A-25 Dia.3.2mm  
A-26 Dia.4.0mm  
A-33 Dia.1.5mm



H. Sleeve(trocar)  
A-14 for 4mm, 5mm pin  
A-15 for 5mm, 6mm pin  
A-18 for 3mm pin



I. Guide plate  
A-19 for 3mm pin



J. Socket Wrench  
A-261 5.5mm



K. Pin Holder  
A-27 2mm



L. T-handle w/Jacobs chuck & key  
A-30



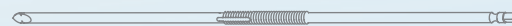
### Dependability

Solid construction, Disposable, Reliable  
( γ-ray sterilization )

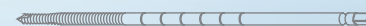


### Enhanced Soft Tissue Management

Better stability for the injured limbs and faster recovery for the soft tissue surrounding the fracture site.



Full Pin



Half Pin  
2-staged pin



Half Pin